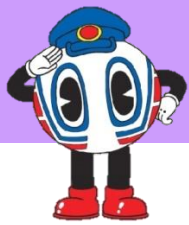


One-Day trip to Whales and science of sea Museum by Sanriku-Railway



Miyako
Station



Sokei
Station



Iwate Funakoshi
Station

9:55_{DEP}
12:30_{DEP}

9:58_{DEP}
12:33_{DEP}

10:44_{ARR} ※From Miyako Sta. JPY¥1,030
13:17_{ARR} ※From Sokei Sta. JPY¥940

Approx. 10 minutes walk

Whales and science of sea Museum
Entrance Fee : JPY ¥ 300

2 hours of stay for
the visit and/or
shopping



Miyako
Station



Sokei
Station



Iwate Funakoshi
Station

13:46_{ARR}
15:36_{ARR}

13:43_{ARR}
15:33_{ARR}

12:51_{DEP} ※To Miyako Sta. JPY¥1,030
14:49_{DEP} ※To Sokei Sta. JPY¥940

Approx. 10 minutes walk